

6 DEALER MANUAL FOR H550 (RM G06A2.750.D)



CONTENT

6.1 Introduction	2	6.3 Drive Unit Installation	4
6.2 Specifications	3	6.3.1 List of Tools to be Used	4
6.2.1 Outline and Geometric Size	3	6.3.2 Motor Installation	4
6.2.2 Surface	3	6.4 Maintenance	5
6.2.3 Storage Information	3		

6.1 INTRODUCTION



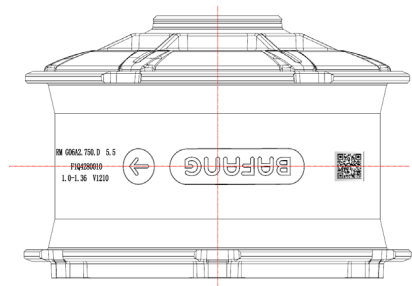
- **Product Model**
RM G06A2.750.D

- **Scope**

i Applies only to electrically powered pedelecs developed or licensed by Bafang. It is suitable for fat bikes or all terrain bikes, which have been developed for off road on gravel or sand use. The engine is not suitable for sport competitions.

- **Identification**

The following graphic, is the identification numbers of the product, which are shown on the housing:



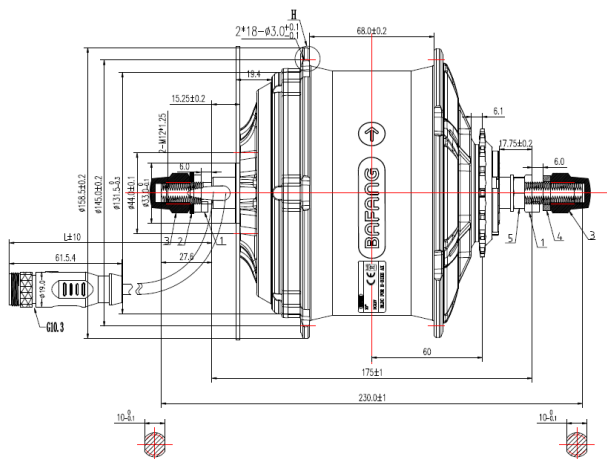
Note: Content in the label is important information about this product. Please do not remove the information from the motor.

6.2 SPECIFICATIONS

Motor model: RM G06A2.750.D

Rated power (W)	750
Rated voltage (V)	48
Waterproof	IP66
Certification	CE - EMC
Outdoor Temperatures	-20 °C~45 °C

6.2.1 Outline and Geometric Size



OLD: 175mm

Shaft length: 230mm

Motor cable length: L=250mm

6.2.2 Surface



Shockproof coating and color according to customer's order.

6.2.3 Storage Information

The pedelec should be stored in a ventilated dry room. Avoid storing the pedelec near strong magnetic objects.

6.3 DRIVE UNIT INSTALLATION

6.3.1 List of Tools to be Used

Use of the Tools	Tools
To tighten/loosen the M12 flange nuts.	 Open spanner
To tighten/loosen the screws onto the disc brake.	 Internal hex wrench

6.3.2 Motor Installation

1. First place the disc brake on to the motor and tighten with six screws.



2. Respectively mount the bushing, hex nut and stop pin on the flywheel.



3. Insert the motor into the frame and hang up the chain.



4. Mount stop pins and washers on both sides of the motor shaft.



5. Tighten clockwise M12 flange nuts with open spanner at both sides of the motor. (torque requirement: 47-55 N.m.)



6. Connect motor's cabling.



6.4 MAINTENANCE

- Maintenance must be carried out by authorized personnel with the correct equipment.
- Do not disassemble the motor.
- Do not use thinners or other solvents to clean the components. Such substances can damage the surfaces.
- Avoid water submerging, to keep the components protected.
- Avoid using high-pressure cleaning jets.
- For prolonged storage, turn off the battery and avoid storing near heat sources.